

## Specification draft 2022-04-11

### Optional Inner tent liner for the Geodesic Basic Family Tent

#### 1. Specifications: Materials

<i>1.1 Specifications for the inner tent liner canvas</i>	
Type and norms	Required minimum values
1. Composition ISO1833	Polyester or Polycotton fabric
2. Specific weight (g/m <sup>2</sup> ) ISO3801	110g/m <sup>2</sup> ±15% in finished state. net weight
3. Colour	White or whitish
4. Finishing	Soft-touch and pleasant feel (similar to cotton fabric)
5. Water-vapour permeability ISO17229	Minimum 2000g/m <sup>2</sup> /24h.
6. Tensile strength (N) ISO13934-1	Warp and weft 300N minimum.
7. Tear resistance, started (N) ISO13937-2	Warp and weft 20N minimum.
8. Flame retardant under CPAI84	Pass CPAI84 section 6. Ageing under ISO4892-2, type A, 180 hours.

<i>1.2 Specifications for the mosquito net</i>	
Type and norms	Required minimum values
1. Material ISO1833	Polyester
2. Fabrication ISO8388	Warp knitted
3. Mesh size	20 to 25 holes/cm <sup>2</sup>

4. Openness	Minimum 55%
5. Shrinkage ISO5077	5% maximum
6. Bursting strength ISO13938	600kPa minimum
7. Bursting strength after exposure to UV and moisturizing (climatic simulation). Exposure in a climatic chamber under ISO 4892-2, type A, 180 hours, followed by bursting test under ISO13938	50% maximum strength-loss on original value of the same product, <u>and</u> not less than 420kPa Number of test pieces: 3 test pieces of each type.

## 2. Specifications: Characteristics of the inner tent liner

### 2.1. General description

The inner tent liner hangs inside the main tent; it covers the entire inner surface of the tent, apart from the ground. The bottom of the inner tent liner is extended in order to lay on the ground by 200mm.

The inner tent liner has 6 windows, 2 doors, and 2 ventilation corresponding to the main tent windows, doors and ventilations. Accessing the ventilation shutters of the main tent is possible through the inner liner ventilation openings.

At the center of the liner roof, a slot is provided to allow passing the main tent central anchoring system (see Tent specification 3.4).

### 2.2. Inner tent liner dimensions

The inner tent liner, when hooked to the main tent, must have a centre height of 220 cm. All dimensions are designed to ensure a 10cm air gap between the main tent and the inner tent liner.

At the bottom of the walls, the liner is attached to the main tent in order to have a proper tensioning.

### 2.3. Inner doors

Each door opening is 0,9m wide and 1.7m high. The door panels are made with the same polyester material.

The doors are closing with 2 vertical zippers, with 10cm overlapping on each side. Loop and hooks system must be provided to keep the door opened when rolled up.

#### **2.4. Inner tent liner suspension system**

The inner tent liner is attached to the main tent with sufficient number of Velcro brackets and plastic buckles, located along each pipe, and at 100mm above the ground level. There are 36 Velcro straps provided on the inner liner, corresponding to the 36 plastic buckles of the main tent. In the center of the roof, there is one attachment buckle on each end of the center slot.

#### **2.5. Inner tent liner ventilation system**

The inner tent liner has 2 triangular vents of 850mm length x 550mm height, made of mosquito netting. The vents are located on both sides of the tent matching with the main tent vents. They can be opened and closed with zippers on two sides. These vents have shutters made of the same material as the inner tent liner, closing with zippers.



## 2.6. Inner tent liner windows

The inner tent liner has 6 windows of equal size and location with the main tent windows. These windows have a fixed mosquito net. The windows can be closed with flaps, made of the same material as the inner tent liner, opening downwards and closing with a 25mm Velcro strip on three sides.

4 side windows



2 gable windows



## 2.7. Accessories inside the inner tent liner

To hang light-weight items, four 20mm-hooks (mounted on 20mm webbing) are available. These hooks are located under the two diagonal cross arches, where the highest inner tent liner hook connecting to the main tent is located.

Six pouches, made of inner liner material, of 250 x 300mm inner dimension, are available inside the inner tent liner under each window.

Four A5 pouches made of net are available under the transversal arch, at 500mm from either side of the centre of the roof.

The 10 pouches are stitched on their upper edge and hang freely.

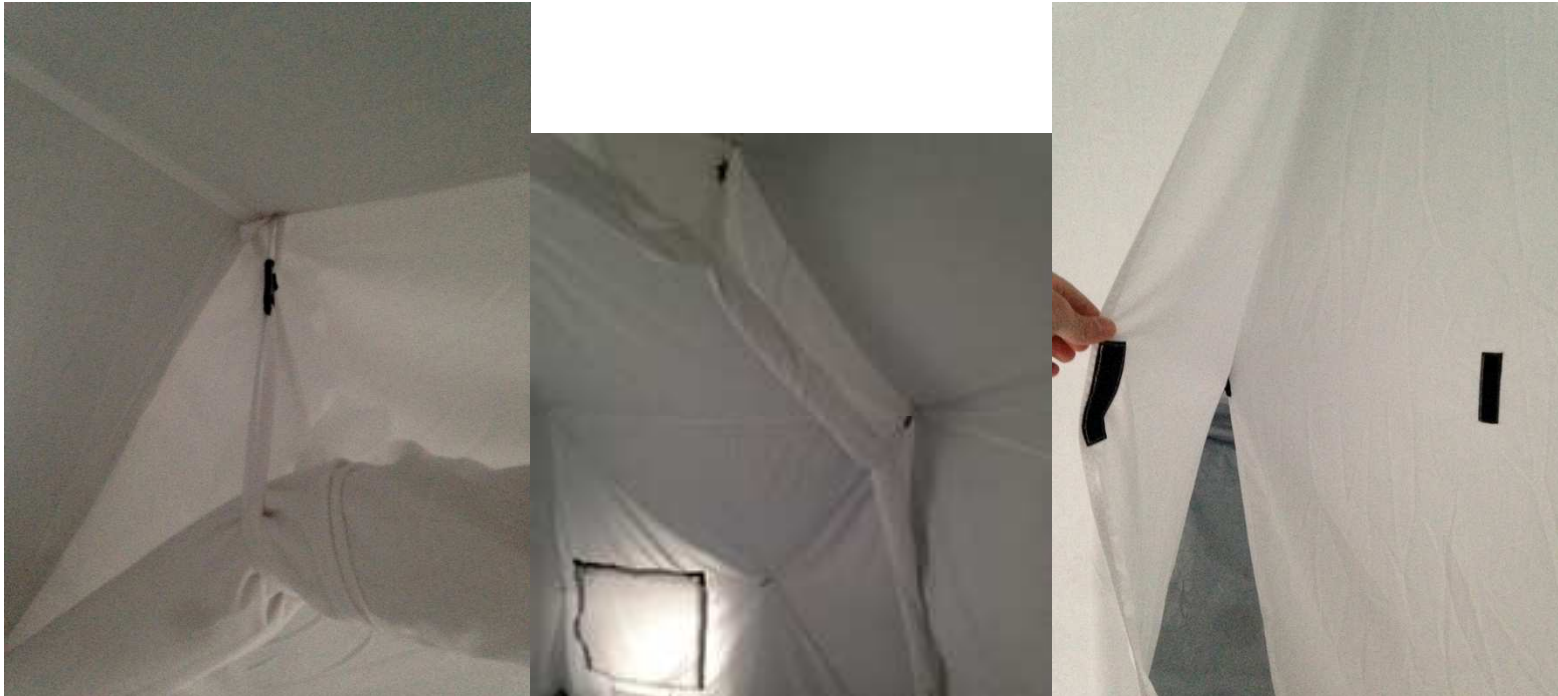


Four pockets (15x20cm – netting) at the roof level + six pockets (30x25cm – Polyester FR fabric) under the windows.



### 2.8. Inner partition

One partition divides the inner tent liner into two equal spaces. It runs from either side to the opposite side. The partition is made of the same polyester material, and is stitched to the inner tent liner along the roof line that goes from the left corner to the right corner (laying on the floor with 20cm). They can open in the centre (overlapping of 30cm). Each half-partition can be maintained open with a pair of laces or loop and hook system.







## 2.9. Chimney reinforcement

A chimney reinforcement (non-perforated) must be located on one side of the tent, matching with the chimney patch of the main tent, with same material and same dimensions. The tent fabric is removed and replaced with the chimney patch.

## 2.10. Fire safety information

Fire safety information must be available inside the inner tent liner. This must be printed with durable print on a piece of canvas stitched inside the inner tent liner next to the chimney protection.

The tent is Flame Retardant to an extend that allows 4 minutes evacuation time.  
Don't use open fire in the tent.  
use a stove with flue pipes.  
Place the stove away from the walls.  
floor protection is mandatory.  
Cut a cross in the fireproof fabric patch to pass the flue pipe and cut away the plastic layer.  
Always maintain some ventilation, especially when the stove is in use.  
Do not lock the doors when people are inside the tent.

الخيمة مصنوعة من مادة مقاومة للاشتعال تتيح لكم أربع دقائق للإخلاء  
لا تُشعلوا نارا داخل الخيمة مباشرة، بل استعملوا موقدًا بمدخنة  
ابعثوا الموقد عن جدران الخيمة واستخدموا عازلا لحماية أرضية الخيمة  
اقطعوا نسيج الخيمة المضاد للحريق في شكل+  
لتمرير أنبوب مدخنة الموقد وتخلصوا من الطبقة  
المصنوعة من البلاستيك  
احرصوا على ضمان حد أدنى من التهوية دائما، وخصوصا عند استخدام الموقد  
لا تُقفلوا مدخل الخيمة بقتل عند وجود أشخاص داخل الخيمة .

Tienda retardante de fuego ofreciendo 4 minutos para evacuar el sitio.  
Nunca haces fuego abierto en la tienda, usa una estufa con chimenea.  
Aleja la estufa de las paredes y protege obligatoriamente el suelo.  
Corte una cruz en la tela antifuego para pasar la chimenea, y elimine el plastico.  
Mantenga siempre una ventilación, particularmente cuando se usa la estufa.  
Nunca cierre las puertas con candado si alguien esta a dentro.

**Caution  
Fire risk**

## 2.11. Manufacturer identification

Made with a strong textile tag of 10x10cm with durable print, and stitched inside the tent liner, in a vertical seam at a corner. The tag should include the manufacturer's name, the batch number and the production's date.