

DROUGHT EMERGENCY RESPONSE IN SOMALIA

JANUARY - APRIL 2017

The humanitarian situation in Somalia is on the verge of catastrophe, and concern is growing that the trajectory is worryingly similar to Somalia's 2011 famine disaster, when an estimated 260,000 people died. Today, an estimated 6.2 million, more than half the country's population, face acute food shortage and the number of severely malnourished children is on the rise. This desperate situation comes against a backdrop of protracted conflict that has disrupted livelihoods and vital services such as health and water. The International Committee of the Red Cross (ICRC) jointly with the Somali Red Crescent Society (SRCS) and its vast network of volunteers continue to help drought-affected communities across Somalia in areas prone to conflict that are difficult to access.

RELIEF ACTIVITIES



160,032
PERSONS

received food rations of 50kg of rice, 25kg of beans and 10 litres of oil per household



45,264
PERSONS

received essential household items (EHI)

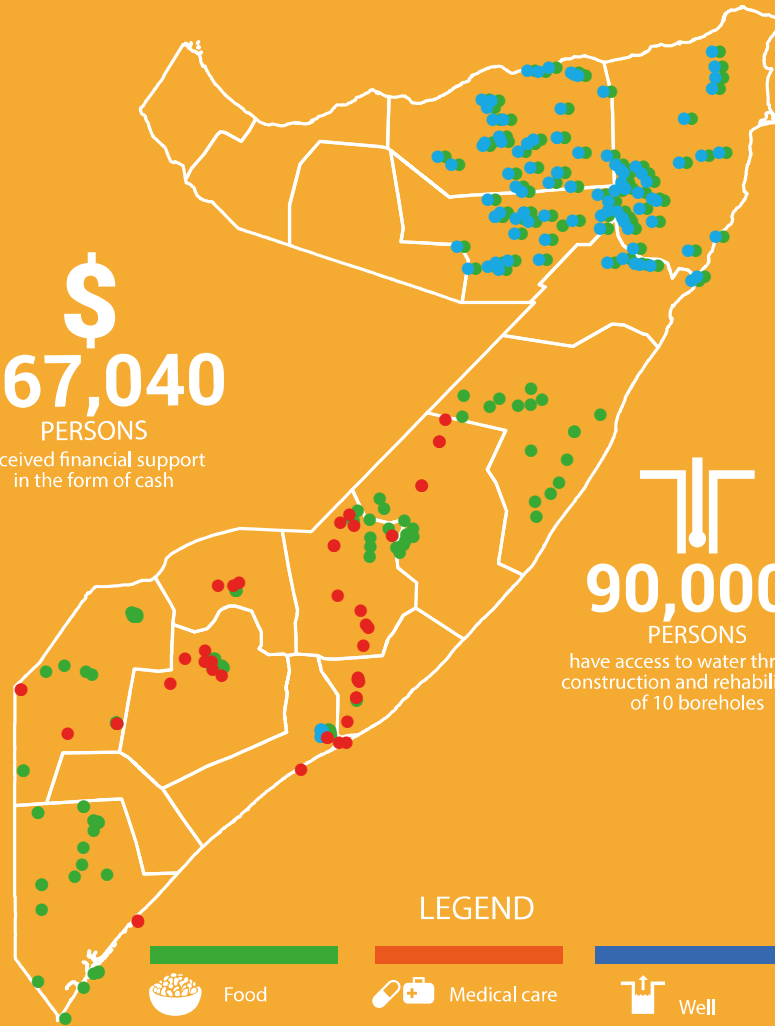


167,040
PERSONS

received financial support in the form of cash

761,772*
PEOPLE ASSISTED

*Individuals benefiting from one or more assistance activities including food, EHI relief, health, water and sanitation



LEGEND



Food



Essential Household Items



Cash



Medical care



Treatment Centers



Stabilization Centers



Well



Borehole



Water Points



83,288
PERSONS

received medical care at 25 SRCS clinics and 6 mobile health clinics

HEALTH CARE ACTIVITIES



12,710
PERSONS

Number of malnourished children treated in stabilization centers and SRCS clinics



3,836
PERSONS

were admitted in cholera treatment centres in Kismayo and Baidoa hospitals

WATER & SANITATION ACTIVITIES



379,178
PERSONS

benefitted from access to safe and clean water through household water treatment, chlorination of water supplies and hygiene promotion

90,000
PERSONS

have access to water through construction and rehabilitation of 10 boreholes

11,430
PERSONS

benefitted from the construction and deepening of wells



ICRC