

TB BEHIND BARS: Every inmate counts



ICRC

DID YOU KNOW?



TUBERCULOSIS (TB), a highly communicable disease, is one of the world's top health challenges with 9 million new cases and nearly 1.5 million deaths each year.
*Source: World Health Organization

Up to **5 IN EVERY 1000** Filipinos may have TB*



In jails and prisons, as many as **21 IN EVERY 1000** inmates may have TB due to overcrowding and often poor living conditions
Source: Philippine Tuberculosis Society Inc.



1 inmate with TB can infect **AS MANY AS 20** others in a year. If left undetected and untreated, half of them will die within 2 years.*



PHILIPPINES: FINDING THE MISSING TB CASES

in two pilot sites supported by the ICRC

QUEZON CITY JAIL

2011



NEW BILIBID PRISON

2012



Since then, the ICRC in cooperation with the Department of Health, detention authorities and other partners of the National Tuberculosis Control Program in the Philippines, strengthened TB management in these sites.

- 1** mobile digital X-ray donated to effectively screen inmates for TB
- 1** TB microscopy lab equipped, with three laboratory staff trained
- 5** isolation cells renovated to properly segregate up to 60 TB patients while infectious
- 9** different trainings improved capacity of 22 health staff to respond to inmate health needs

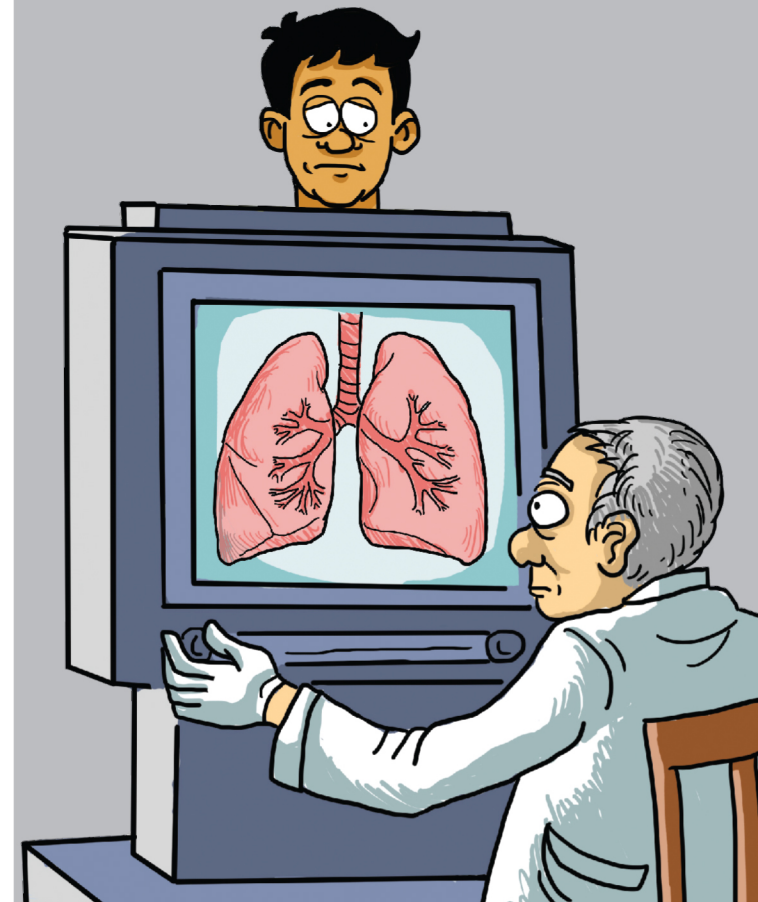
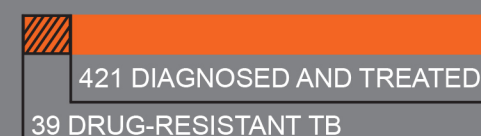
2014



- 1** mobile digital X-ray donated to effectively screen inmates for TB
- 1** Genexpert diagnostic system given for rapid detection of drug-resistant TB
- 62** Task Forces organized to educate and engage inmates' cooperation in TB prevention and infection control

200 bed capacity TB Treatment Unit rehabilitated

2014



Within two years of the pilot projects, a **31% INCREASE IN DETECTION** led to successful treatment of 970 inmates.



In 2014, **OVER 30,000 INMATES** have been systematically screened.



Over **140,000 inmates in 550 jails/prisons in the Philippines** can benefit from proper TB management.

WORLD TB DAY 2015:

“Reach the 3 million. Reach, treat, cure everyone.”

